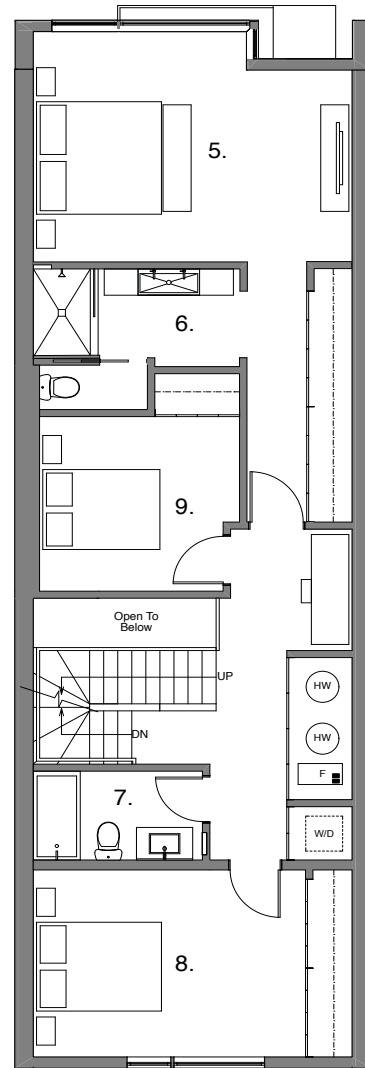
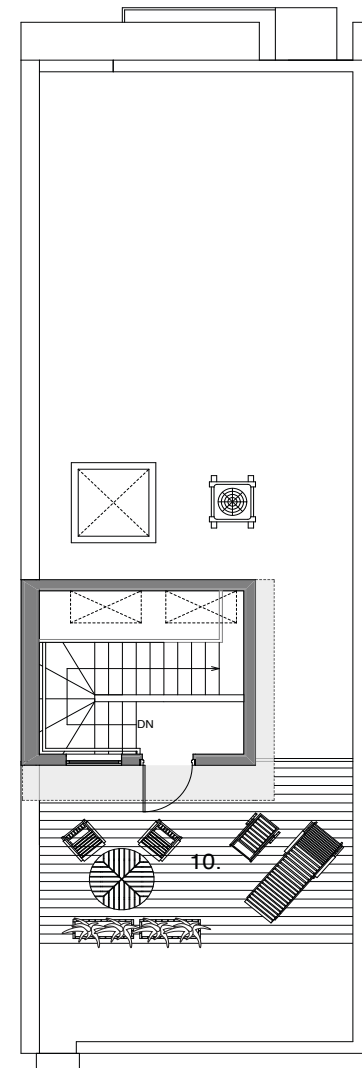


FIRST FLOOR



SECOND FLOOR



ROOFTOP

- | | | |
|-----|--------------|-----------------|
| 1. | Living | 17'-0" x 18'-0" |
| 2. | Kitchen | 16'-6" x 16'-6" |
| 3. | Entry Closet | 2'-8" x 6'-0" |
| 4. | Garage | 17'-4" x 19'-2" |
| 5. | Master Bed | 17'-0" x 13'-0" |
| 6. | Master Bath | 11'-0" x 7'-6" |
| 7. | Bath 2 | 9'-0" x 5'-0" |
| 8. | Bed 2 | 14'-6" x 10'-6" |
| 9. | Bed 3 | 11'-0" x 10'-0" |
| 10. | Roof Deck | 17'-0" x 10'-0" |

SQUARE FOOTAGE: 2,235 sq ft

SPECIFICATIONS

PLAN A 3 BEDROOMS / 2 BATHS

FIRST FLOOR

- *Flooring:* Concrete with clear sealer and radiant heat
- 10' ceiling height
- Oversized casement and picture windows
- *Stairs to 2nd floor:* Hardwood treads and risers

KITCHEN

- *Cabinets:* Italian cabinets with integrated dining table supplied by Archisesto
- *Countertop:* 1-1/4" Quartz
- *Sink:* Single-bowl stainless steel undermount
- *Faucet:* Grohe Concetto Pull-Down

APPLIANCES

- *Refrigerator:* Jenn-Air French door with ice maker, stainless steel
- *Oven:* Bosch 30" electric wall oven, stainless steel
- *Cooktop:* Bosch 30" gas cooktop, stainless steel
- *Dishwasher:* Bosch 24" stainless steel
- *Hood Fan:* Falmecc integrated hood
- *Disposal:* KitchenAid 1/2 h.p.

SECOND FLOOR

- *Flooring:* 2-1/4" select white oak, natural satin finish in hallways
- Stairs to roof: Carpet
- 9'-6" ceiling height

MASTER BEDROOM

- *Flooring:* 2-1/4" select white oak, natural satin finish

MASTER BATH

- *Flooring:* 2-1/4" select white oak, natural satin finish
- *Tile:* 12" x 24" Porcelain on shower floor and shower walls to ceiling
- *Sink & Cabinet:* Novello Light45 supplied by Archisesto
- *Lav faucets:* Grohe Concetto
- *Shower faucet:* Grohe Concetto shower combo
- *Toilet:* Toto Aquia II dual flush
- Frameless 1/2" shower glass panel

SECOND BEDROOM / THIRD BEDROOM

- *Flooring:* Carpet

SECOND BATH

- *Tile:* 12" x 24" Porcelain on floor and tub surround to ceiling
- *Sink & Cabinet:* Novello Light45 supplied by Archisesto
- *Lav faucet:* Grohe Concetto
- *Tub:* Duravit D-Code drop-in soaking tub
- *Tub faucet:* Grohe Eurosmart
- *Toilet:* Toto Aquia II dual flush
- Recessed Broan medicine cabinet

ROOFTOP

- Large 17' x 10' finished deck
- Frost proof hose bib

INTERIOR FINISHES

- *Doors:* 8' solid-core, painted white
- *Trim:* 3/4" x 4" painted flat-edge base
- *Paint:* Intense White on walls & trim; Ceiling painted white
- *Door hardware:* Schlage Elan
- *Switches/Outlets:* Flat-panel Decora

GREEN FEATURES

- Nest learning thermostat
- Velux skylights
- High efficiency Energy Star furnace with air conditioning and humidifier
- *Insulation:* Combination of open cell and closed cell foam insulation in roof cavity (R49 in roof, R19 batts in exterior walls)
- Low VOC paint
- Dual flush toilets
- Energy Star appliances

ADVANCED TECHNOLOGY LIFESTYLE FEATURES

- Network Distribution Center
- High bandwidth, Quad Shield RG6 video outlets
- Telecom/data outlets utilizing high speed CAT 6 cable
- Computer network ready for multi-user Internet connectivity
- High-speed Internet ready

GENERAL FEATURES

- 2 car garage
- *Yard:* Professionally landscaped with concrete patio & hose bib
- 4" recessed can lighting with white baffle and white trim
- Hook up for optional washer & dryer
- Fire protection sprinkler system
- Optional powder room on first floor