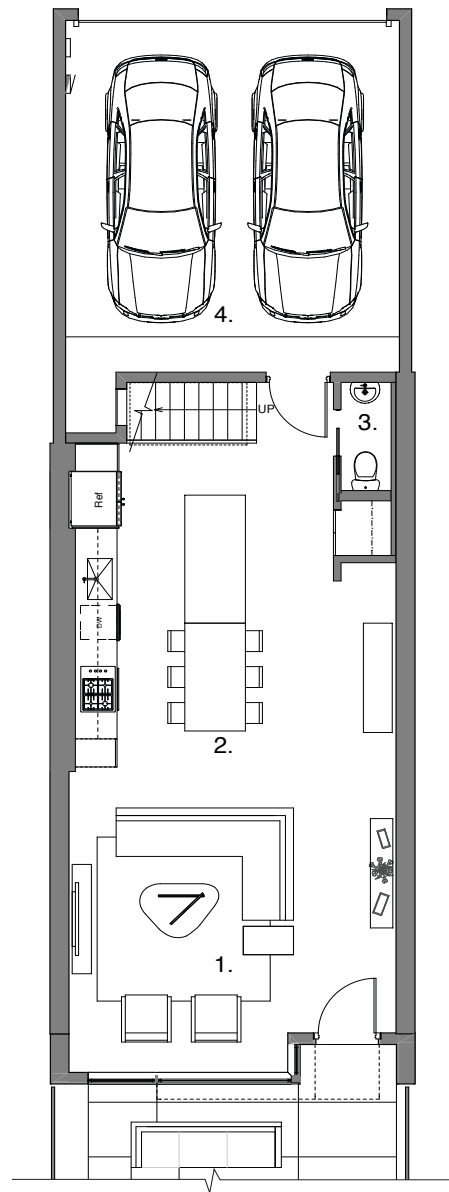
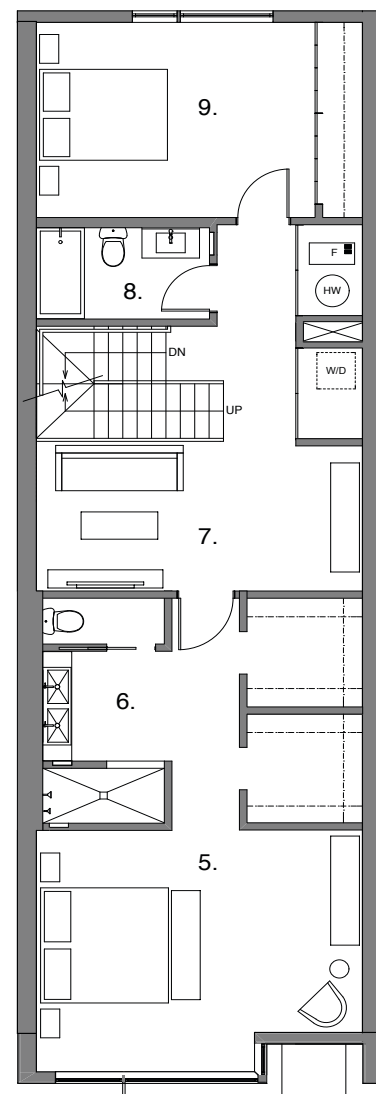


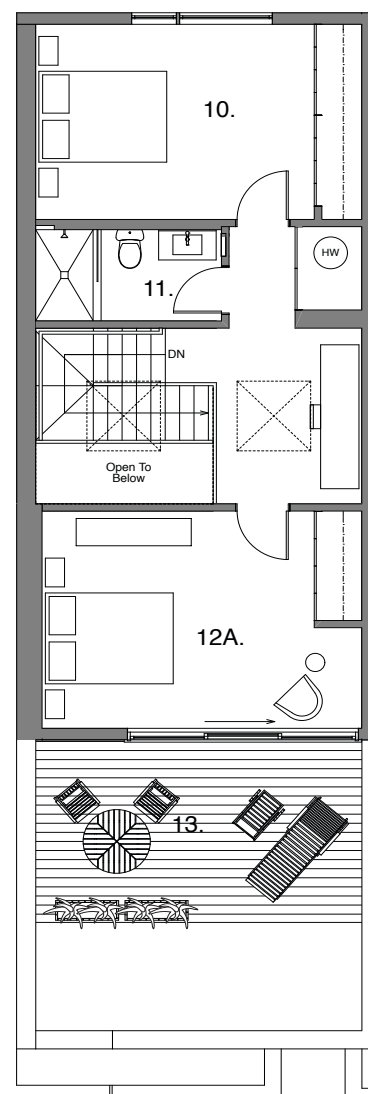
FIRST FLOOR



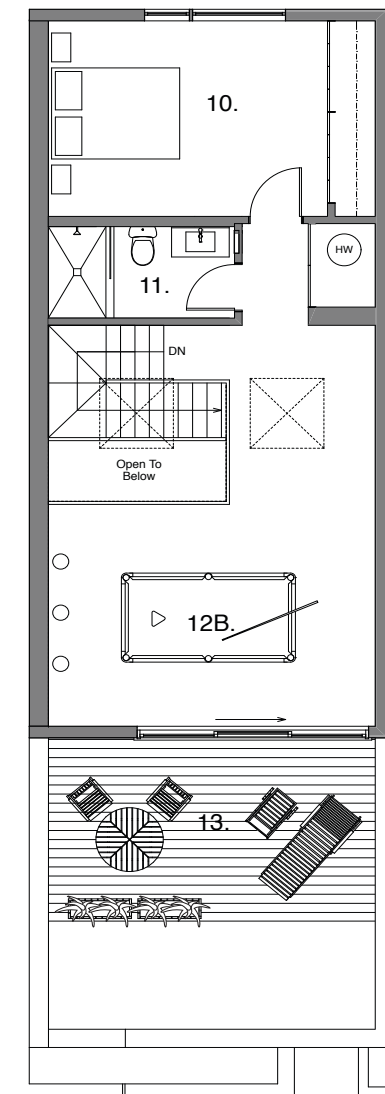
SECOND FLOOR



THIRD FLOOR



OPTIONAL THIRD FLOOR



1.	Living	17'-0" x 18'-0"	8.	Bath 2	9'-0" x 5'-0"
2.	Kitchen	16'-6" x 16'-6"	9.	Bed 2	14'-6" x 11'-0"
3.	Powder Room	2'-8" x 6'-0"	10.	Bed 3	14'-6" x 11'-0"
4.	Garage	17'-4" x 19'-2"	11.	Bath 3	9'-0" x 5'-0"
5.	Master Bed	17'-0" x 13'-0"	12A.	Bed 4	17'-0" x 12'-0"
6.	Master Bath	7'-0" x 13'-0"	12B.	Opt. Family Room	17'-0" x 22'-0"
7.	Media	17'-0" x 7'-6"	13.	Roof Deck	17'-0" x 10'-0"

SQUARE FOOTAGE: 2,820 sq ft

SPECIFICATIONS

PLAN B 4 BEDROOMS + MEDIA / 3.5 BATHS

FIRST FLOOR

- *Flooring:* Concrete with clear sealer and radiant heat
- 10' ceiling height
- Oversized casement and picture windows
- *Stairs to 2nd floor:* Hardwood treads and risers

KITCHEN

- *Cabinets:* Italian cabinets with integrated dining table supplied by Archisesto
- *Countertop:* 1-1/4" Quartz
- *Sink:* Single-bowl stainless steel undermount
- *Faucet:* Grohe Concetto Pull-Down

APPLIANCES

- *Refrigerator:* Jenn-Air French door with ice maker, stainless steel
- *Oven:* Bosch 30" electric wall oven, stainless steel
- *Cooktop:* Bosch 30" gas cooktop, stainless steel
- *Dishwasher:* Bosch 24" stainless steel
- *Hood Fan:* Falmec integrated hood
- *Disposal:* KitchenAid 1/2 h.p.

POWDER ROOM

- *Sink:* Novello Light45 supplied by Archisesto
- *Lav Faucet:* Grohe Concetto
- *Toilet:* Toto Aquia II dual flush

SECOND FLOOR

- *Flooring:* 2-1/4" select white oak, natural satin finish in hallways
- *Stairs to third floor:* Carpet
- 9'-6" ceiling height on 2nd & 3rd Floor

MASTER BEDROOM

- *Flooring:* 2-1/4" select white oak, natural satin finish

MASTER BATH

- *Flooring:* 2-1/4" select white oak, natural satin finish
- *Tile:* 12" x 24" Porcelain on shower floor and shower walls to ceiling
- *Sinks & Cabinet:* Novello Light45 supplied by Archisesto
- *Lav faucets:* Grohe Concetto
- *Shower faucet:* Grohe Tempesta shower head & hand shower
- *Toilet:* Toto Aquia II dual flush
- Frameless 1/2" shower glass panel

SECOND / THIRD / FOURTH BEDROOM OR FAMILY ROOM

- *Flooring:* Carpet

SECOND BATH

- *Tile:* 12" x 24" Porcelain on floor and tub surround to ceiling
- *Sink & Cabinet:* Novello Light45 supplied by Archisesto
- *Lav faucet:* Grohe Concetto
- *Tub:* Duravit D-Code drop-in soaking tub
- *Tub faucet:* Grohe Eurosmart
- *Toilet:* Toto Aquia II dual flush
- Recessed Broan medicine cabinet

THIRD BATH

- *Tile:* 12" x 24" Porcelain on floor and shower surround to ceiling
- *Sink & Cabinet:* Novello Light45 supplied by Archisesto
- *Lav faucet:* Grohe Concetto
- *Shower base:* Fiberglass
- *Shower faucet:* Grohe Concetto
- *Toilet:* Toto Aquia II dual flush
- Recessed Broan medicine cabinet
- Frameless 1/2" glass shower panel

MEDIA ROOM

- *Flooring:* 2-1/4" select white oak, natural satin finish

ROOF DECK

- Large 17' x 10' finished deck
- Frost proof hose bib

INTERIOR FINISHES

- *Doors:* 8' solid-core, painted white
- *Trim:* 3/4" x 4" painted flat-edge base
- *Paint:* Intense White on walls & trim; Ceiling painted white
- *Door hardware:* Schlage Elan
- *Switches/Outlets:* Flat-panel Decora

GREEN FEATURES

- Nest learning thermostat
- Velux skylights
- High efficiency Energy Star furnace with air conditioning and humidifier
- *Insulation:* Combination of open cell and closed cell foam insulation in roof cavity (R49 in roof, R19 batts in exterior walls)
- Low VOC paint
- Dual flush toilets
- Energy Star appliances

ADVANCED TECHNOLOGY LIFESTYLE FEATURES

- Network Distribution Center
- High bandwidth, Quad Shield RG6 video outlets
- Telecom/data outlets utilizing high speed CAT 6 cable
- Computer network ready for multi-user Internet connectivity
- High-speed Internet ready

GENERAL FEATURES

- 2 car garage
- *Yard:* Professionally landscaped with concrete patio & hose bib
- 4" recessed can lighting with white baffle and white trim
- Hook up for optional washer & dryer
- Fire protection sprinkler system